

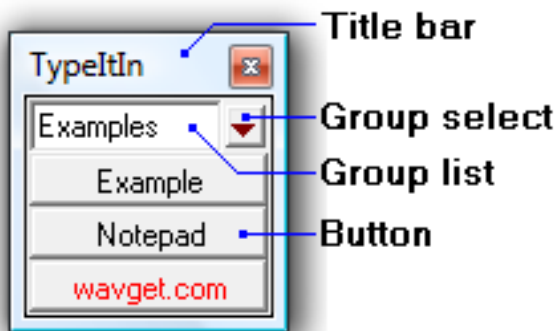
TypeltIn Professional & Network

Thank you for using TypeltIn from wavget.com.

TypeltIn is shareware and free to try for 30 days. If you like it and want to continue to use it after 30 days, please purchase a license at wavget.com.

TypeltIn was created to increase your productivity and accuracy while filling out forms on the web, answering emails, processing orders, and many other tasks where you frequently type the same thing again and again.

TypeltIn will work in most programs, including word processing applications, remote desktop windows, and many more. In other words, it is not limited to just your web browser!



Right click on the Group list for the Group popup menu , or right click on a button to access the Button popup menu . Click the Group select button to select a different group. Right click on the Title bar to access the Title Bar Menu . Can't wait to get started? Read the Quick Startup Guide .

In addition to typing regular text TypeltIn also supports many special functions that can type the date or time, run a program or open a web page, work with the clipboard, perform mouse functions, and move or resize windows. With the Network version you can share groups manually or automatically across a network.

Quick Startup Guide

If this is the first time you installed TypeltIn it will automatically create an Examples group for you with three buttons.

- **Example:** Types "Example Button" and presses the Enter key.
- **Notepad:** Runs Notepad and types "Thank you for using TypeltIn!" and presses the Enter key.
- **wavget.com:** Opens www.wavget.com in your default browser.

To use a button that types text (like the Example button) *first* click where you want TypeltIn to type. Then *immediately* after that click on the button.

TypeltIn will type wherever the text cursor was just before you clicked the button.

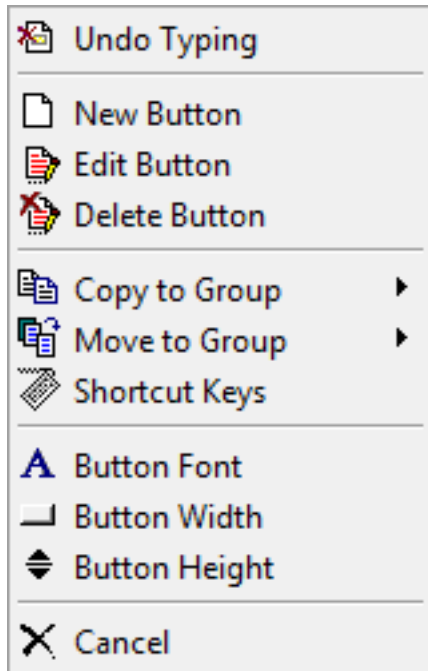
To create a new button, or edit an existing button, [right click on the button](#) to pop up the button menu .

To create or edit groups, [right click on the group list](#) to pop up the group menu .

In addition to typing simple text, TypeltIn supports many special functions .

Button menu

Right click on a button to pop up the button menu.



Undo typing. This function will attempt to delete the text typed by the last button that was active. Complex actions like function keys or running an external program can not be undone.

New button. Select this menu option to create a new button in this group. This action will open the Button Edit Window . You can also drag and drop an item to create a button.

Edit button. This menu option allows you to edit the button that you right clicked on to open the button menu. This will open the Button Edit Window with the selected button information.

Delete button. This function allows you to delete the selected button after a confirmation dialog.

Copy to group. With this function you can copy a button to another group. A sub menu displays the names of the groups. After you select a group name the button will be copied. Note: The shortcut key will not be copied. You can copy multiple buttons in Setup - Groups .

Move to group. This function allows you to move a button to another group. A sub menu displays the names of the groups. After you select a group name the button will be copied to the group and deleted from the current group. The shortcut key will be moved with the button. You can move multiple buttons in Setup - Groups .

Shortcut keys. This option will open the short cut key dialog box that will allow you to manage short cut key settings for groups and buttons.

Button font. This option allows you to change the name of the font used to display the name on the button.

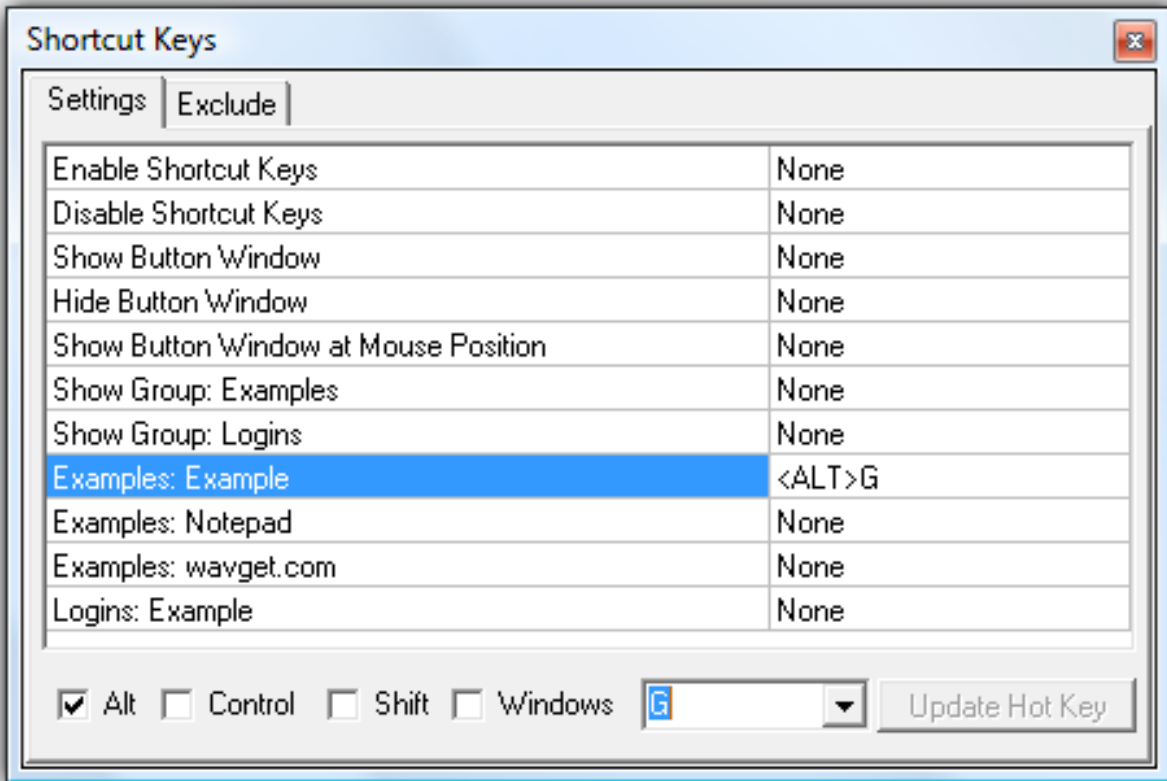
Button width. Use this option to change the width of the buttons to between 50 and 200 pixels.

Button height. Use this option to change the height of the buttons to between 10 and 60 pixels.

Cancel. Do not select any of the menu options and close the button menu.

Note: In the Network version all these menu options can be individually disabled to prevent a user from creating and/or modifying buttons created by an administrator.

Shortcut Keys



This window allows you to assign shortcut key combinations like **ALT-G** or **CONTROL-ALT-B** to functions, groups, or buttons.

In the above example the **ALT-G** key combination will activate the Example button in the Examples group.

To assign a shortcut key, first select the item you want to assign it to in the list. Next, select one or more of the Alt, Control, Shift, and Windows check boxes and select a character, number, or function key from the drop down list. For example, for **ALT-G**, check the ALT box and select G from the drop down list.

After you select the key combination, click the **Update button** to assign the shortcut key combination to the selected item. If a dialog appears with the message that TypeltIn is unable to set the shortcut key, the key combination is already in use by TypeltIn or another program.

Right click on the list to sort it by function or shortcut key.

In the Network version of TypeltIn you are also able to create a list of shortcut key combinations that are not allowed in the Exclude section.

Setup

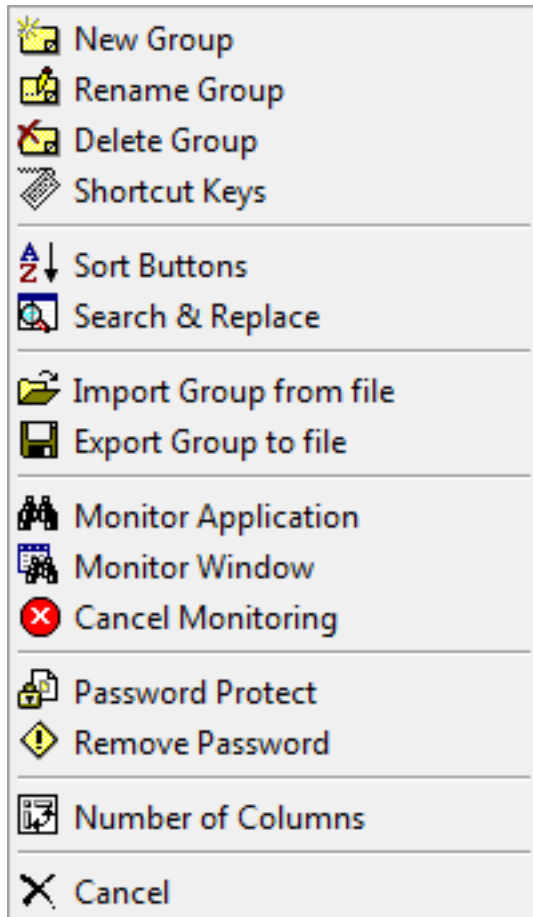
Right click on the TypeltIn icon in the task bar tray and select Setup from the pop up menu to open the Setup window.

There are four sections in the Setup window.

- **Settings.** General options , backup settings, password protection settings, and auto hide button window options.
- **Groups.** Manage groups and buttons, and select startup group.
- **Delays.** Set delay before start of typing and between keys.
- **Network.** Manage data file directory , group file sharing directory, and button usage statistics.

Group menu

Right click on the group list to pop up the group menu. Right click on the group select button to cycle through groups. Hold the Shift key down to cycle in reverse.



New group. This option allows you to create a new group. After you enter a name TypeltIn will create a new group with an Example button. You can edit this button or delete it after you make additional buttons. (right click on the button to access the Edit or Delete menu options)

Rename group. Select this option to change the name of the group. After you enter the new name TypeltIn will verify that a group with the new name does not already exist and change the name of the group.

Delete group. This option will completely delete the group and all the buttons in it. You have to click Yes in the confirmation dialog before TypeltIn will delete the group. Deleting a group can not be undone.

Shortcut keys. This option will open the short cut key dialog box that will allow you to manage short cut key settings for groups and buttons.

Sort buttons. This menu option will sort all the buttons in the group alphabetically by button name. You can also arrange buttons by holding you right mouse button down on one and dragging it to a new location. When you release the right mouse button TypeltIn will insert the button where you dropped it. You can arrange groups in Setup - Groups .

Search & replace. This option will open the search & replace dialog . This function is only available in the Network version of TypeltIn.

Import group. This menu option allows you to import a group of buttons from a TypeltIn Group File (.tgf). This function is only available in the Network version of TypeltIn. See group import & export for more information.

Export group. This function enables TypeItIn to export a group of buttons to a TypeItIn Group File (.tgf) that can be imported by another copy of TypeItIn. This function is only available in the Network version of TypeItIn. See `group import & export` for more information.

Monitor application. The monitor application function enables TypeItIn to automatically switch to group when a specific application becomes active. If you have the `remember position` feature enabled the button window will also automatically move to the saved position on the screen.

Monitor window. The monitor window function enables TypeItIn to automatically switch to group when a specific window (title) becomes active. If you have the `remember position` feature enabled the button window will also automatically move to the saved position on the screen.

Cancel monitoring. Use the cancel monitoring function to stop this group from monitoring for a specific application or window.

Password protect. This function allows you to password protect a group. You will have to enter a password before you can use or modify any buttons in a password protected group. After you enter the password the group will be unlocked until you change groups or manually relock it.

Remove password. Use this menu option to remove the password protection from a group.

Number of columns. This menu option allows you to change the number of button columns.

Cancel. Do not select any of the menu options and close the group menu.

Note: In the Network version all these menu options can be individually disabled to prevent a user from creating and/or modifying buttons created by an administrator.

Network Version

There are two versions of TypeItIn, the Professional and the Network version. While the Professional version is geared towards individual users, the Network version is designed to operate in a more corporate (networked) environment.

The Network version adds the ability to share groups of buttons both manually and automatically across a network. Sharing groups of buttons, especially with a large number of users, can save an enormous amount of time during start-up and organizational changes. It also simplifies support, allowing a user to load 'known good' buttons created by a support person. See [group import & export](#) for more information.

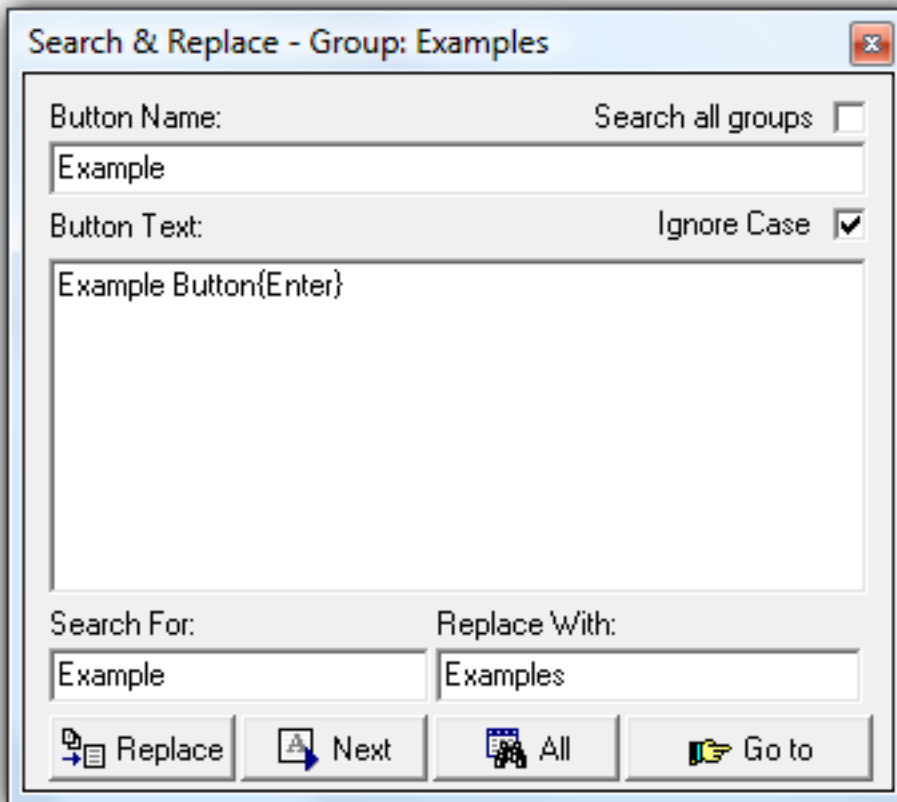
The Network version also allows an administrator control over many menu options that can be individually disabled to prevent a user from creating and/or modifying buttons. In addition, the URL for the support web site can be configured to open a page on your own server, and data, backup, load, and save directories can be set.

The Network version also provides button usage statistics allowing you to monitor button usage to further increase productivity.

The Network version of TypeItIn has been proven through studies to increase both productivity and accuracy.

If you have any questions about how TypeItIn could be configured to best serve your application, please email support@wavget.com.

Search & Replace



This dialog allows you to search for button name and text and replace it. This function also allows you to locate a button and switch to the group that contains it.

Search all groups. When this option is checked TypeltIn will search all groups for the text. When it is not checked it will only search the current group.

Ignore case. TypeltIn will ignore the case of the characters when this is checked.

Replace. Replace the highlighted text in the button name or text with the replacement text.

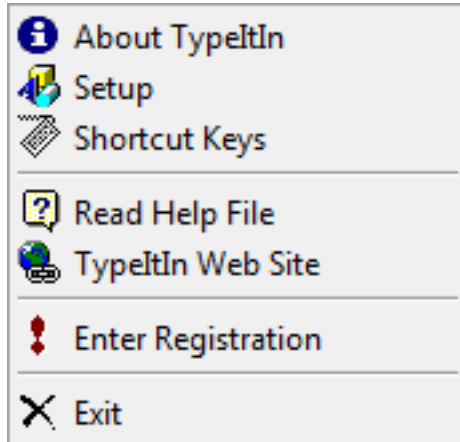
Next. Search for the next occurrence of the text.

All. Automatically replace all occurrences of the text in the button name and text.

Go to. Switch to the group that contains the button that has been found to match the text.

Tray Menu

Right click on the TypeItIn icon in the task bar tray (next to the clock) to pop up the tray menu. Left click on it to hide or show the button menu.



About TypeItIn. This menu option will display the About TypeItIn dialog window. In this window you will be able to see what version of TypeitIn you are using (Professional or Network) and the version number. This dialog also displays who this copy of typeitIn is registered to or provides you with a link to a web page where you can purchase a TypeitIn license.

Setup. This option will open the TypeItIn Setup window. The Setup window allows you to configure TypeitIn in many different ways.

Shortcut keys. This option will open the short cut key dialog box that will allow you to manage short cut key settings for groups and buttons.

Read help file. Selecting this menu option will open this help file.

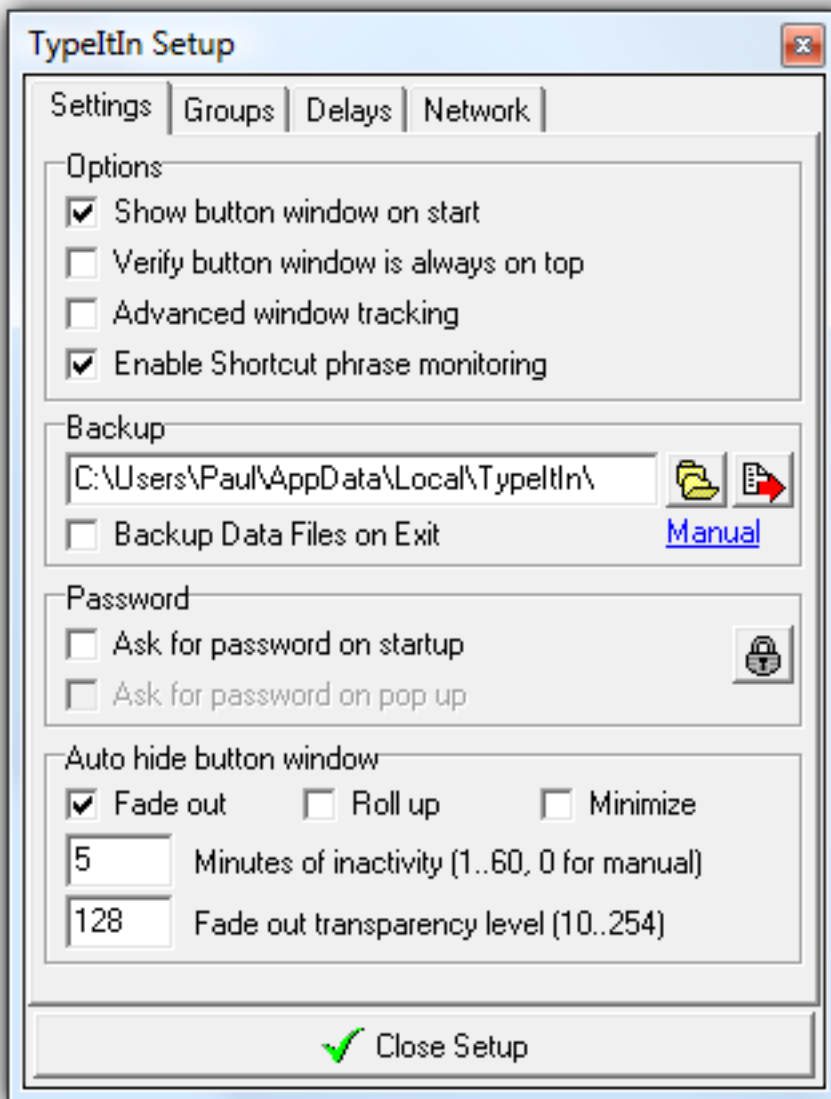
TypeitIn web site. This menu option will open the TypeitIn web page in your browser. The URL accessed by this button can be modified in the Network version .

Enter registration. Use this menu option to enter your TypeitIn registration information after you purchase a license.

Exit. This menu option will save all settings and exit the TypeitIn program.

Setup - Settings

Right click on the TypeltIn icon in the task bar tray and select Setup from the pop up menu to open the Setup window. Then select the Settings tab.



- **Show button window on start.** Check this option to show the button window automatically when you first start TypeltIn.
- **Verify button window is always on top.** When this option is checked TypeltIn will continuously try to make sure it is always on top of all other windows.
- **Advanced window tracking.** TypeltIn tracks your activity so it knows where to type when you click a button. If nothing happens when you click a button in a specific window, check this box and try it again.
- **Enable shortcut phrase monitoring.** With this box checked TypeltIn will be able to monitor your typing and activate buttons based on a short phrase. For example, typing the letters ex could activate the example button.

If you save a lot of important information in TypeltIn, it is always a good idea to create a backup of your

data files that contain the button information.

In the backup section you can select what directory is used to store the backup data files. Click the Backup button (with the red arrow) to make a backup of your data files into the selected directory. You can also check the Backup data files on exit box to automatically create the backup files.

Use the [Manual link](#) to open Windows Explorer in the directory where your button data files are stored to manually copy the files to a backup location.

If you check the Ask for password on Startup box, you will be asked to enter a password. After you enter the password, you can also check the option to Ask for the password every time you pop up the button window.

You can change the password by clicking the Set Password button in Setup. You can remove the password protection by entering a blank password.

Warning: The 128-bit encryption used by TypeItIn is state of the art and there is no known-good method of deciphering the content of the data file without the password. If you forget your password, you will *not* be able to retrieve your data.

The Auto hide function allows you to automatically hide the button window after a period of inactivity. You can choose to hide the window in three different ways.

- **Fade out.** The window will become semi-transparent and you will be able to see the window under it. You can set the transparency level between 10 and 254.
- **Roll up.** The button window will roll up and only the title bar and group list will be visible. You can unroll the window by double clicking on the title bar.
- **Minimize.** The window will be closed completely. You can show the window again by clicking on the TypeItIn icon in the task bar tray.

You can set the required number of minutes of inactivity before the window will become transparent, roll up, or hide.

Title bar menu

Right click on the title bar of the button window to pop up the title bar menu.



Rollup. Select this option to hide all the buttons and display only the title bar and group list. This allows TypeltIn to occupy less space on your screen and still be readily available when you need it. You can also double click on the title bar to rollup or unroll the button window or use the [{RollUp}](#) function .

Save position now. Selecting this option causes TypeltIn to save the location of the button window on the screen. The next time you switch to the group TypeltIn will automatically move the button window to this position.

Forget position. Select this option to stop moving the button window to the saved position when you switch to the group.

Manual fade in/out. This menu option enables you to manually fade the button window. You can select to do this automatically in Setup .

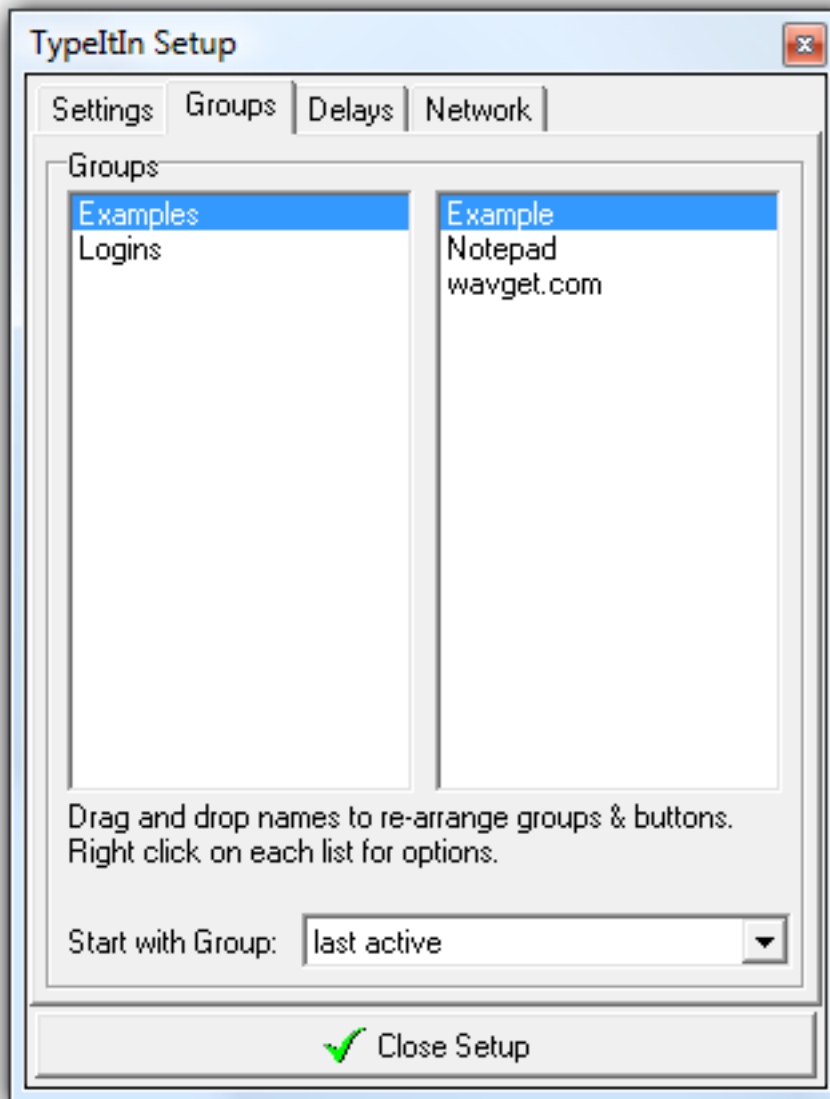
Move. This option allows you to move the button window. You can also hold the left mouse button down on the title bar and move it to a new location.

Size. This option allows you to resize the button window. You can also hold the left mouse button down on the border of the button window and resize it. TypeltIn will automatically adjust the number of button columns based on the width of the window. You can also set the number of button columns manually .

Close. Select this menu option to close and hide the button window. You can show it again by clicking on the TypeltIn icon in the task bar tray.

Setup - Groups

Right click on the TypeItIn icon in the task bar tray and select Setup from the pop up menu to open the Setup window. Then select the Groups tab.



The Groups section of Setup provides you with a central place to arrange groups and buttons.

Click on one of the groups in the left list to show the buttons in that group in the list on the right.

You can rearrange the groups by dragging a name to a new location and dropping it. You can do the same with the buttons.

Right click on a group name to pop up a menu to create a new group, rename it, delete the group, or sort the groups alphabetically.

Right click on a button name to pop up a menu to create a new button, rename it, delete the button, or

configure the button text and background color.

You can select multiple buttons at the same time for the delete and color options. To select a range of buttons, select the first one and then hold the shift key down while you select the last one. This will select the first, the last, and all buttons in between.

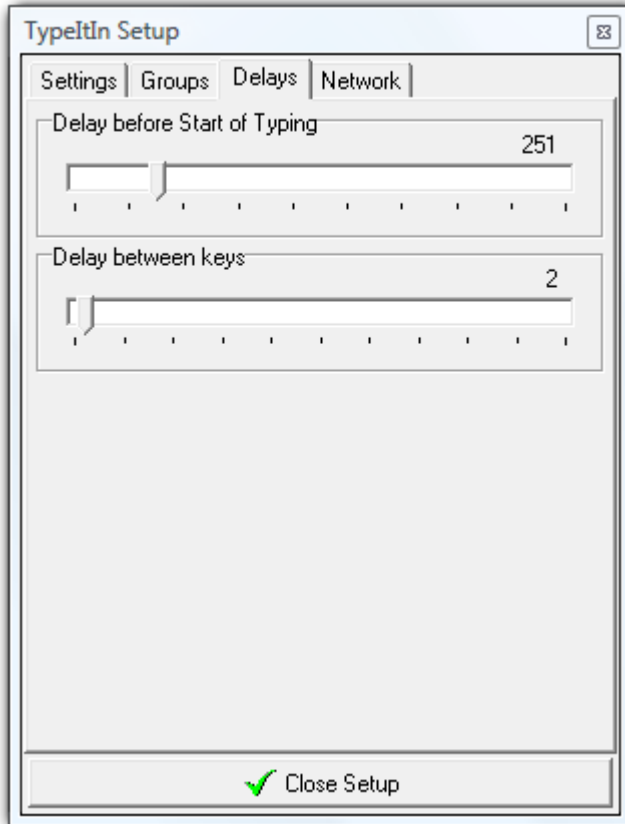
To select a number of non sequential buttons, hold the control button down when you click on the button.

After you select one or more buttons you can also copy or move them to another group, just drag them from the button list onto a group name. A menu will pop up where you can select to copy or move the button(s) to the selected group.

You can select what group should be active when you first start TypeltIn. Select last active from the list to simply select the group that was active the last time you exited TypeltIn, or select a group name from the list.

Setup - Delays

Right click on the TypeItIn icon in the task bar tray and select Setup from the pop up menu to open the Setup window. Then select the Delays tab.



TypeItIn is able to type keys much faster than a human being, so some delays are needed to give the programs you are typing into some time to process the keys.

Delay before start of typing. This delay, typically around 250 msec, is the time between when you click the button and when TypeItIn starts typing the first character. Some programs like Microsoft Word may need more time to get ready than other simpler programs like Notepad. If TypeItIn has trouble typing the first characters correctly, you may want to try to increase this value a little.

Delay between keys. This is the time between keystrokes, typically around 2 or 3 mSec. If some characters in the middle of a word are incorrect, or there are lower case characters where there should be upper case ones, try to increase this delay a little.

The speed at which programs can accept user input also depends on the amount of background programs that are running. Because of this you may have to change these settings after you install some new software, or a Windows update.

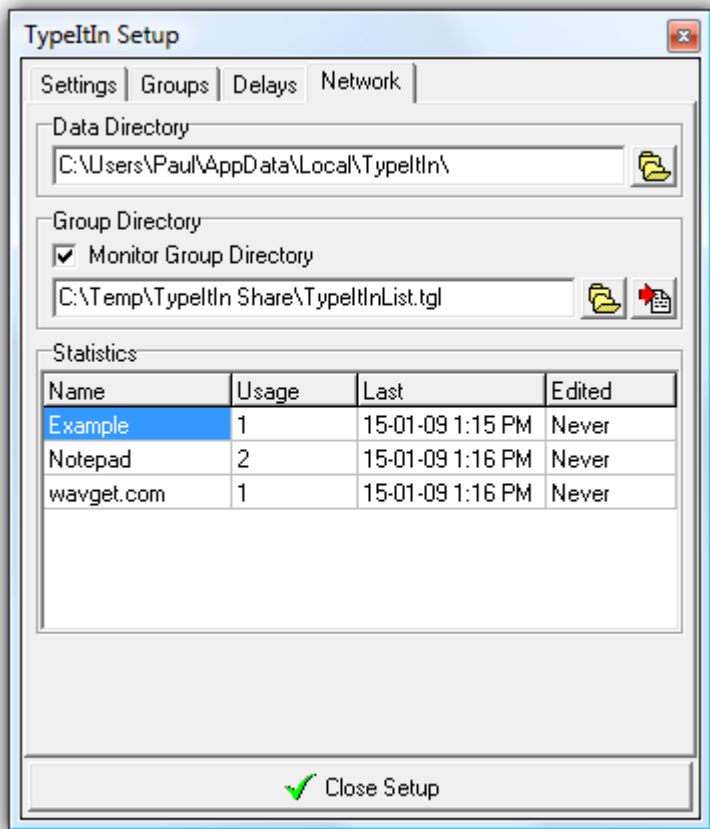
Drag and drop

You can create a button by dragging a program or document onto the [Group List](#). For example, if you drag the [c:\My Documents\My Letter.doc](#) file onto the [Group List](#), TypeItIn will create a button with `{run c:\My Documents\My Letter.doc}`. When you click this button it will run WordPad or Microsoft Word and open the My Letter.doc file.

You can also create a button that will send your browser to a web site by dragging the URL onto a [button](#). For example, if you are at [www.wavget.com](#) and you drag the little favicon next to the address bar onto any [button](#), TypeItIn will create a new button with `{run www.wavget.com}`. If you click this button it will open your default browser if it is not already running and send it to [www.wavget.com](#).

Setup - Network

Right click on the TypeltIn icon in the task bar tray and select Setup from the pop up menu to open the Setup window. Then select the Network tab.



The following functions are only available in the Network version of TypeltIn.

Data directory. This is the folder where the TypeltIn data files are stored that contain your button information and other settings. You can change the directory by clicking on the folder button and navigating to the new directory. You can then choose to copy your existing data files to that directory or use the data files already in that directory. New data files will automatically be created if none exist in the new directory.

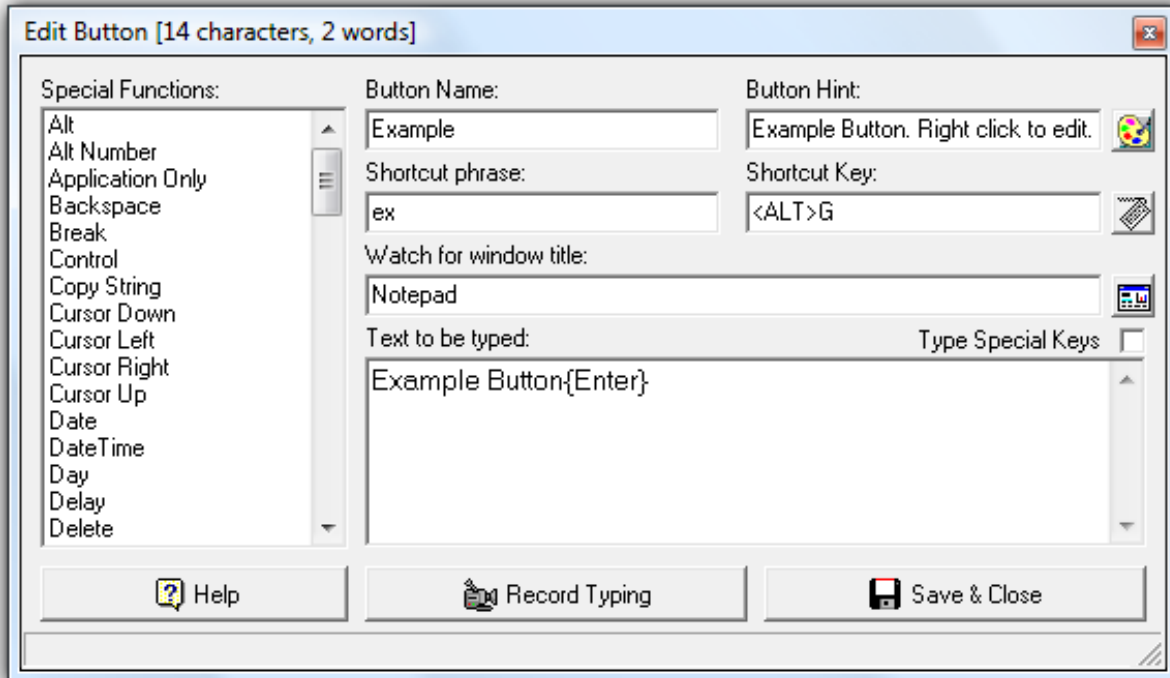
You can select a network drive that is always mapped to your personal directory on the network to enable roaming profile that allows you to access your buttons from different computers.

Monitor group directory. Select the check box and navigate to the folder that contains the group files that you want to monitor. (The folder will contain a TypeltInList.tgl file) TypeltIn will monitor the group files for changes made with other copies of TypeltIn and load the changes automatically. This allows an administrator to create groups of buttons, save them to a directory on the network, and the updates will be automatically loaded by all users monitoring that directory. See [group import & export](#) for more information.

Statistics. This table shows the button usage statistics. TypeltIn keeps track of how many times the button was used, when it was last used, and when it was last edited. This information is also saved in the ButtonStatistics.txt file in the data directory. (CSV file format)

Button edit window

Right click on a button and select New Button or Edit button from the pop up menu to open this window.



Special functions. This is a list of special functions like {Date} to type the date and special characters like {Alt a}. Click on a special function to see a short description in the status bar at the bottom of the window, or double click on it to insert it into the text to be typed when you click the button. Here is a list of the special functions with detailed descriptions and examples.

Button name. This is the name that appears on the button. You can change the width of the button in the Button menu if you need more space for a longer name.

Button hint. This is the text that will appear in a small hint window if you move your mouse over the button. This hint window will only show if TypeltIn is the active application.

Button color. Click this button to open the Button color window to change the color of the text and the background color of a button.

Shortcut phrase. This is a short word that will trigger the button. In this example, if you type "ex" (without the "" of course) a small hint window will appear in the title bar of the application that you are typing into with the name of the group and button associated with the shortcut phrase. If you then press the Control key, TypeltIn will erase the "ex" and type the contents of the button, in this case "Example Button{Enter}". For this function to work, Enable shortcut phrase monitoring must be enabled in Setup - Settings .

Shortcut key. This shows the shortcut key combination assigned to the button, in this example ALT-G. Click the button next to it to open the short cut key dialog box that will allow you to manage the short cut key settings. When you press the shortcut key combination TypeltIn will type the contents of the button wherever your text cursor is.

Watch window title. This function allows TypeltIn to watch for a window title. When the text in the watch box matches part or all of a window title a small hint window will appear in the title bar of the application associated with the watch. When you then press the Control button TypeltIn will type the contents of the button wherever your text cursor is. Click the button next to the watch box to change the title to watch for. A dialog will tell you to click OK and then directly after that on the title bar of the application window that you want to watch for. You can also manually enter a part of the window title to watch for.

Type special keys. When this box is not checked you can type into the Text to be typed area and use

the arrow keys to navigate through the text like you would in a normal text editor. Only the Enter and Tab key will automatically be translated in their corresponding functions, {Enter} and {Tab}. When this box is checked, the arrow keys and most other keys will be automatically translated as well. For example, pressing F1 will result in {F1}, up arrow in {up}, numeric keypad 2 in {Num 2}, and escape in {Esc}.

Text to be typed. This is the text that will be typed and the functions that will be performed when the button is activated by clicking on it, by a shortcut key, by a shortcut phrase, or by a window watch match.

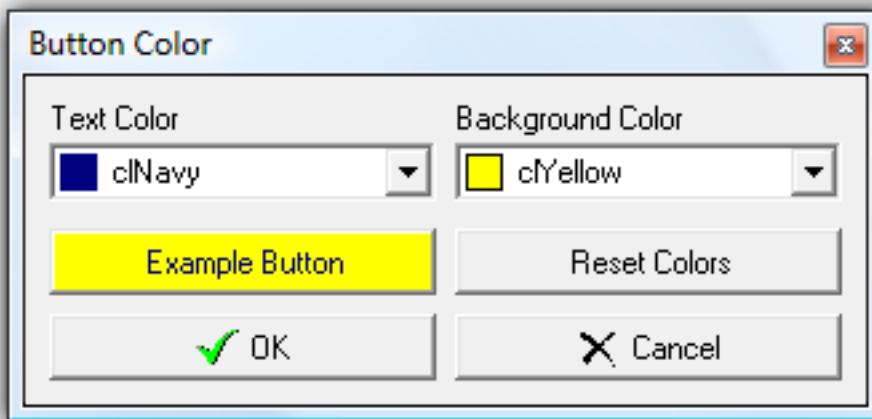
Help. Opens this help file.

Record typing. This function allows you to type directly into the application that you are creating a button for and the text will automatically be added to the text to be typed information. For example if you type your username, tab to the next box, type your password, and then press enter, the text to be typed would be "username{Tab}password{Enter}". (of course your username and password would be different!)

Save & Close. Click this button to save all the changes you have made in the Button edit window and close it. If you want to close the window without saving the changes, click the red X button on the top right of the window.

Button color window

Right click on a button and select Edit button from the pop up menu to open the Button edit window . Then click the Color button to open the Button color window.



Text color. This is the color of the text that appears on the button. Select a color from the drop down list to change the color. If you select Custom a Color dialog will appear where you can select additional colors or define your own custom colors.

Background color. This is the color of the background of the button. Select a color from the drop down list or create a custom color like with the text color.

Example button. This button shows what a button with the current text and background colors looks like.

Reset colors. Click this button to reset the button colors to black text on a standard Windows Button Face color.

OK. Save the current color settings and close the Button color window.

Cancel. Discard any changes you made to the color settings and close the Button color window.

Special functions

Alt

Description: Type an Alt key combination like Alt-F.

Example: `{Alt F}` for Alt-F or `{Alt {Esc}}` for Alt-Escape. You can combine Shift, Alt, and Control like `{Alt {Control b}}`.

AltNum

Description: Type a specific character number like Alt-0169.

Example: `{AltNum 0169}` to type ©.

App

Description: Continue typing only if specific application is active.

Example: `{App notepad.exe}`This will only type into Notepad.

Backspace

Description: Type the backspace key.

Example: `{Bksp}`

Beep

Description: Plays a system standard beep sound.

Example: `{Bksp}`

Break

Description: Type the break key.

Example: `{Break}`

Clear

Description: Type the clear key.

Example: `{Clear}`

Control

Description: Type a Control key combination like Control-C.

Example: `{Ctrl a}` to select all text, `{Ctrl c}` to copy it to the clipboard. You can combine Shift, Alt, and Control like `{Shift {Control b}}`.

Copy string

Description: Copy a part of a text string into variable.

Example: `{Copy 1,3,2,Sample}` copy 3 characters starting at character 1 and put result into variable 2. Variable 2 will contain "Sam".

Cursor Down, Left, Right, Up

Description: Type a cursor key.

Example: `{Down} {Left} {Right} {Up}`

Date

Description: Type the date in specified format .

Example: `{Date mm/dd/yyyy}` types 01/21/2009.

`{Date mm/dd/yy,30}` adds 30 days to the current date, and types 02/20/2009.

DateTime

Description: Type date and time in specified format .

Example: `{DateTime mm/dd/yyyy hh:mm}` types 01/21/2009 10:32.

`{DateTime mm/dd/yyyy hh:mm,0.5}` adds 0.5 days (12 hours) to the current data and time, and types 01/21/2009 22:32.

Day

Description: Type the day of the week.

Example: `{Day}` types Wednesday.

Delay

Description: Wait for a number of milliseconds before continuing.

Example: `{Delay 250}` waits 250 milliseconds before continuing with the remainder of the text to be typed.

Delete

Description: Type the delete key.

Example: `{Del}`

Dialog

Description: Displays a dialog to the user. See `dialog` section for more information.

Example: `{Dialog 0,Information,[Yes,No],Dialog Text}`

End

Description: Type the end key.

Example: `{End}`

Enter

Description: Type the enter key.

Example: `{Enter}`

Escape

Description: Type the escape key.

Example: `{Esc}`

Function key

Description: Type the a function key like F1.

Example: `{F1}` or `{F8}`.

Hide

Description: Hide (minimize to the task bar tray) the `TypeItIn` button window.

Example: `{Hide}` You can use `{Show}` to show the window again.

Home

Description: Type the home key.

Example: `{Home}`

If, Elself, Else

Description: Perform actions based on evaluation of variables. See `If, Then, Else` description for more information.

Example: `{If (Var=x) [TypeThis]}` or `{If (Var<5) [TypeThis] Elself (Var>10) [TypeThis] Else [TypeThis]}` or `{If (Var!5) [is not 5] Else [is 5]}`.

Insert

Description: Type the insert key.

Example: `{Insert}`

Internet Explorer Navigate

Description: Open a new Internet Explorer window and open a web page. See `IE control` for more information.

Example: `{IE google.com,10}wavget.com{Enter}` opens a new IE window with the google.com web

site. If the web page can not be opened within 10 seconds, TypeltIn will not continue with the remainder of the text to be typed. If the page loads within the time period, TypeltIn will type wavget.com and press the [enter](#) key.

Internet Explorer Wait

Description: Wait for Internet Explorer to finish loading a web page. See [IE control](#) for more information.

Example: `{IEWait 5}` waits 5 seconds for the page to load.

`{IE google.com,10}wavget.com{Enter}{IEWait 5}{Ctrl a}{Ctrl c}` opens google.com in Internet Explorer, waits for the page to load, and directs Google to search for wavget.com. TypeltIn then waits for the search results to load, selects all the text on the page with Ctrl-A, and then copies all the text to the clipboard with Ctrl-C.

Jump to group

Description: Change to a group. See also [Sub Group](#) further down this page.

Example: `{Group Example}` jumps to the Example group.

Length of string

Description: Returns the length of a string into a variable.

Example: `{Length 2,Text}` calculates the length of the string `Text` and returns it into variable 2. After this function returns, variable 2 will contain the number 4 because `Text` is 4 characters long. `{Length 2,{Var3}}` returns the length of the text in variable 3 in variable 2.

List

Description: Select an item from a list and type it.

Example: `{List support@wavget.com,typeitin@wavget.com}` displays a list with 2 email addresses. After you double click on one TypeltIn will type that email address and continue. `{List Title:Select a number,1,2,3}` adds a title to the list window. All functions work inside a list, including another list like `{List 1,2,{List Title:Letters,a,b,c}}` will display a list with `1,2,Letters`. If you select `Letters` another list will pop up with `a,b,c`.

FileList

Description: Display a list with items from a text file. See [List from file](#) for more information.

Example: `{FileList C:\Temp\Emails.txt}` displays a list with lines loaded from the `C:\Temp\Emails.txt` file.

Menu

Description: Type the menu key.

Example: `{Menu}`

Month

Description: Type the month of the year.

Example: `{Month}` types January.

Mouse left button drag

Description: Allows a handicapped user to drag a window to a new location with one click of the left mouse button.

Example: `{MouseLeftDrag 50,2,10}` After the user clicks the TypeltIn button with this function, TypeltIn will wait up to 2 seconds (Stable value) for the mouse cursor to become stable within 50 pixels (Pixels value). During this time the user can move the mouse cursor over the title bar of the window to be dragged. After the cursor is stable, TypeltIn will press the left mouse button and hold it down, allowing the user to drag the window to a new location. After 10 seconds (Timeout value) TypeltIn will release the left mouse button, ending the drag operation.

Mouse left click

Description: Click the left mouse button.

Example: `{MouseLeft}` clicks the left mouse button once.

Mouse left double click

Description: Double click the left mouse button.

Example: `{MouseDbfLeft}` double clicks the left mouse button.

Mouse move

Description: Move the mouse cursor to specified screen coordinates.

Example: `{MouseMove 100,200}` moves the mouse cursor to 100 pixels over from the top left of the screen, and 200 pixels down.

Mouse right button drag

Description: Allows a handicapped user to drag a window to a new location with one click of the left mouse button.

Example: `{MouseRightDrag 50,2,10}` see Mouse left button drag for description.

Mouse right click

Description: Click the right mouse button.

Example: `{MouseRight}` clicks the right mouse button once.

Mouse right double click

Description: Double click the right mouse button.

Example: `{MouseDbfRight}` double clicks the right mouse button.

Mouse wheel

Description: Moves the mouse wheel up or down.

Example: `{MouseWheel 500}` moves the mouse wheel down 500 mouse steps. Use a negative value to move the wheel up.

Numlock

Description: Type the numlock key.

Example: `{NumLock}`

Numpad number

Description: Type a number using the numeric keypad.

Example: `{Num 0}`

Page down

Description: Type the page down key.

Example: `{Pg Dn}`

Page up

Description: Type the page up key.

Example: `{Pg Up}`

Paste file

Description: Load a text file and paste it at the text cursor position.

Example: `{PasteFile C:\Temp\Info.txt}` loads the C:\Temp\Info.txt file, copies it to the clipboard, and pastes it at the cursor position. You can also use the paste command to quickly enter a large amount of text, however it can not use special keys like `{Enter}` or `{Tab}`.

Paste text

Description: Paste a text string.

Example: `{Paste Hello!}` copies Hello! to the clipboard and pastes it at the cursor position. You can also use the paste command to quickly enter a large amount of text, however it can not use special keys

like {Enter} of {Tab}. For example, to fill out a form that requires your name, email address, and a 500 word description, you could use: [John Doe{Tab}jdoe@inter.net{Tab}{paste 500 word description here}{Tab}{Enter}](#).

Pause

Description: Wait for a number of seconds before continuing.

Example: [{Pause 5}](#) waits 5 seconds. A count down will show in the title bar of the TypeltIn button window. [{Pause}](#) will display a dialog and wait for the user to click OK before typing continues. Use [{Pause Please wait...{Enter}Click OK when done.}](#) to add text to the dialog box.

Print screen

Description: Type the print screen button.

Example: [{PrnScrn}](#) to take a screen shot of the entire screen, [{Alt {PrnScrn}}](#) to make a screen shot of the active window.

Repeat loop

Description: Repeat typing a number of times.

Example: [{Repeat 8,Thank you for using TypeltIn!{Enter}}](#) types [Thank you for using TypeltIn!](#) (with an [Enter](#) key) 8 times.

Roll up window

Description: Roll up TypeltIn button window.

Example: [{RollUp}](#) You can also double click on the title bar of the Button window to roll it up or select it from the Title bar menu .

Run program

Description: Run an external program or file.

Example: [{Run notepad.exe}](#) or [{Run C:\Program Files\Example\Test.exe}](#) to run a program.

You can also "run" a file that has a program associated with it. For example [{Run example.txt}](#) will open the [Example.txt](#) file in your default text editor, and [{Run Sales.doc}](#) will open [Sales.doc](#) in Microsoft Word. [{Run wavget.com}](#) will open [wavget.com](#) in your default browser. If the program requires a command line parameter, use [{Run ProgFileName,Parameter}](#) like [{Run RebuildDisk,/b/r}](#).

Scrolllock key

Description: Type the scroll lock key.

Example: [{Scroll}](#)

Shift

Description: Type a Shift key combination like Shift-a

Example: [{Shift a}](#) or [{Shift {F1}}](#). You can combine Shift, Alt, and Control like [{Shift {Control b}}](#).

Show TypeltIn

Description: Show the TypeltIn button window.

Example: [{Show}](#) You can use [{Hide}](#) to hide the button window.

String position

Description: Finds the position of a string inside another string and returns it in a variable.

Example: [{Pos 2,only,This is only a test}](#) searches [This is only a test](#) for [only](#) and returns the number 9 in variable 2.

Sub group

Description: Jump to a group with the ability to jump back with [{Sub Return}](#) or press a button with [{Sub Example,Notepad}](#).

Example: [{Sub Example}](#) jumps to the Example group. Use the [{Sub Return}](#) function in that group

to return to the original group. This works up to 25 levels deep. In other words `{Sub Example}` jumps to the `Example` group. From there `{Sub Test}` jumps to the `Test` group. The first `{Sub Return}` returns to the `Example` group, and the next `{Sub Return}` returns to the group where the first Sub command was issued. To activate a button in another group, use `{Sub GroupName,ButtonName}` function like `{Sub Example,Notepad}`.

Sub return

Description: Return back to the last group that issued a Sub command.
Example: `{Sub Return}` See Sub group for a more detailed description.

Tab

Description: Type the tab key.
Example: `{Tab}`

Time

Description: Type the time in specified format .
Example: `{Time hh:mm}` types 12:45.

Type a file

Description: Load a text file and type it at the text cursor position.
Example: `{File C:\Temp\Info.txt}` loads the `C:\Temp\Info.txt` file and types it at the cursor position. You can only type plain text files (like the one you create in Notepad). You can not type files that include formatting information like files created in Word or Excel unless they are saved as a text file. The file is loaded every time the button is pressed, so another program can update the file while `TypeItIn` is not accessing it.

Typing speed

Description: Temporarily adjust typing speed.
Example: `{Speed 5}Test` types the word `test` with 5 milliseconds between each key stroke. You can adjust the typing speed permanently in `Setup - Delays` .

Until loop

Description: Repeat commands until a condition is valid.
Example: `{Var =1}{Until (Var=5) [Hello!{Var +1}]}` set a variable to 1 and then types `Hello!` and increases a variable by one until that variable is 5.

Variable from clipboard

Description: Copy text from the clipboard into a variable. See the `variable section` for more information.
Example: `{Var3 GetClip}` copies text from the clipboard into variable 3.

Variable from file

Description: Copy a line of text from a file into a variable. See the `variable section` for more information.
Example: `{Var5 File,10,C:\Temp\Info.txt}` copies the text from line 10 in the `C:\Temp\Info.txt` file into variable 5.

Variable from list

Description: Select an item from a list and store it into a variable. See the `variable section` for more information.
Example: `{Var3 List 1,2,3,4}` displays a list with 1,2,3, and 4. The user selection will be stored in variable 3.

Variable from window title

Description: Copy title of active window into variable. See the `variable section` for more information.
Example: `{Var4 Window}` copies the text in the title bar of the active window into variable 4.

Variable input

Description: Ask the user to input a value for a variable. See the [variable section](#) for more information.

Example: `{Var3 =?}` displays an input dialog asking the user for a value for variable 3. `{Var3 =?Please enter your name}` displays the dialog requesting the user's name. You can also add a default value: `{Var2 =?Enter name|Paul}`.

Variable load

Description: Load a variable value from the TypeltIn configuration settings file. Also see [Variable save](#) below.

Example: `{Var2 Load Email}` loads a variable called [Email](#). If the variable is not found because it has not been previously saved a dialog will show requesting the user to enter a value. See the [variable section](#) for more information.

Variable print

Description: Type the contents of a variable. See the [variable section](#) for more information.

Example: `{Var}` to type the contents of variable 0 or `{Var3}` to type the contents of variable 3.

Variable save

Description: Save the value of a variable to the TypeltIn configuration settings file. Also see [Variable load](#) above.

Example: `{Var6 Save Email}` save the contents of variable 6 to the configuration settings file as [Email](#). See the [variable section](#) for more information.

Variable to clipboard

Description: Copy the contents of a variable to the clipboard. See the [variable section](#) for more information.

Example: `{Var4 SetClip}` copies the contents of variable 4 to the clipboard.

While loop

Description: Repeat typing and functions while a condition is true.

Example: `{Var =10}{While (Var>2) [Hello{Enter}{Var -1}]}` sets a variable to 10 and then types [Hello](#) and presses the [Enter](#) key. It then [subtracts 1](#) from the value of the variable and types [Hello](#) and [Enter](#) again. This continues while the value of the variable is [greater than 2](#). The compare statement supports [>](#) for greater than, [<](#) for smaller than, [=](#) for equals, and [!](#) for does not equal.

Window activate

Description: Activate a specific window.

Example: `{Activate Notepad}` activates a window with the exact title [Notepad](#). `{Activate Notepad*}` activates a window that contains the word [Notepad](#) in the title. This would match both the [Notepad - Untitled](#) and [Microsoft Word - Notepad file](#) titles.

Window maximize

Description: Maximize a specific window.

Example: `{WinMax Notepad*}` maximizes a window with a title that contains the word [Notepad](#).

Window minimize

Description: Minimize a specific window.

Example: `{WinMin Notepad*}` minimizes a window with a title that contains the word [Notepad](#).

Window only

Description: Continue typing only if specific window is active.

Example: `{Window Bank*}` will continue typing if the word [Bank](#) is anywhere in the title of the active window. It will match both [My Bank Login](#) and [Bank of America](#).

Window position

Description: Move specific window to a location on the screen.

Example: `{WinPos 25,50,Notepad*}` moves a window with a title that contains the word `Notepad` to 25 pixels over from the top left of the screen, and 50 pixels down.

Window size

Description: Resize a specific window.

Example: `{WinSize 800,400,Notepad*}` resizes a window with a title that contains the word `Notepad` to 800 pixels wide and 400 pixels high.

Window wait for

Description: Wait for a specific window to become active.

Example: `{WinWait Notepad*,5}` waits a maximum of 5 seconds for a window with the word `Notepad` in the title to become active.

Windows key

Description: Type an Windows key combination like Windows-L.

Example: `{WinKey L}` locks the computer.

Wrap selection

Description: Wrap text around highlighted text.

Example: `{Wrap ,}` copies highlighted text, adds `` before it, and `` after it and then replaces the highlighted text with the result. For example, if you highlighted the word `Hello` the result would be `Hello`. With `{Wrap " , "}` the result would be `"Hello"`.

Variables

Variables can be used to keep track of record and job numbers or to store text strings.

There are 10 variables you can use, 0 through 9. To type the contents of a specific variable number, simply use `{Var3}` where 3 is the number of the variable.

Use `{Var1 =n}` to assign a value to a variable. For example, to set variable 5 to the value 10, use `{Var5 =10}`, or use `{Var3 =www.wavget.com}` to set variable 3 to www.wavget.com.

You can also ask the user for input with `{Var =?Prompt}` where prompt is the question that will show in the input dialog box like `{Var3 =?Enter invoice number}`. You can add a default value like `{Var =?Enter name|Paul}`.

If the variable contains a numeric value you can increase it with `{Var2 +5}` or decrease it with `{Var8 -3}`. This of course does not work if the variable contains a text string.

You can also load and save variables. For example, if you want to keep track of job numbers TypeltIn can type a unique number every time you click the button.

Example: `{Var1 Load JobNum}{Var1}{Var1 +1}{Var1 Save JobNum}`

`{Var1 Load JobNum}` loads the variable called JobNum into variable number 1. If the variable does not exist (it has not been saved before) TypeltIn will show a dialog where the user can type in the initial value. If you enter 2009001 the first time you click the button the first job number will be 2009001, the second time you click the button it will be 2009002, third time 2009003, and so on.

`{Var1}` types the contents of variable 1, in case of the example, the first time you click the button it would type 2009001.

`{Var1 +1}` increases the value in variable number 1 by 1.

`{Var1 Save JobNum}` saves the contents of variable 1 to JobNum so it can be loaded the next time you click the button.

You can use `{Var3 SetClip}` to transfer the contents of a variable to the clipboard, or `{Var5 GetClip}` to put the contents of the clipboard into a variable.

Use `{Var2 Window}` to copy the title of the active window into a variable.

TypeltIn can also display a list and return the user's selection in a variable. For example `{Var3 List Title:Select a number,One,Two,Three}` displays a list with **One**, **Two**, and **Three**. If the user selects **Two** variable 3 will contain **Two**.

Most special functions accept a variable as a parameter.

Date and Time format parameters

The formatted date and time functions accept the following parameters:

d	Displays the day as a number without a leading zero (1-31).
dd	Displays the day as a number with a leading zero (01-31).
ddd	Displays the day as an abbreviation (Sun-Sat) using the strings given by the ShortDayNames computer setting.
dddd	Displays the day as a full name (Sunday-Saturday) using the strings given by the LongDayNames computer setting.
dddddd	Displays the date using the format given by the ShortDateFormat computer setting.
dddddd	Displays the date using the format given by the LongDateFormat computer setting.
m	Displays the month as a number without a leading zero (1-12). If the m specifier immediately follows an h or hh specifier, the minute rather than the month is displayed.
mm	Displays the month as a number with a leading zero (01-12). If the mm specifier immediately follows an h or hh specifier, the minute rather than the month is displayed.
mmm	Displays the month as an abbreviation (Jan-Dec) using the strings given by the ShortMonthNames computer setting.
mmmm	Displays the month as a full name (January-December) using the strings given by the LongMonthNames computer setting.
yy	Displays the year as a two-digit number (00-99).
yyyy	Displays the year as a four-digit number (0000-9999).
/	Displays the date separator character given by the DateSeparator computer setting.
h	Displays the hour without a leading zero (0-23).
hh	Displays the hour with a leading zero (00-23).
n	Displays the minute without a leading zero (0-59).
nn	Displays the minute with a leading zero (00-59).
s	Displays the second without a leading zero (0-59).
ss	Displays the second with a leading zero (00-59).
z	Displays the millisecond without a leading zero (0-999).
zzz	Displays the millisecond with a leading zero (000-999).
t	Displays the time using the format given by the ShortTimeFormat global variable.
tt	Displays the time using the format given by the LongTimeFormat global variable.
am/pm	Uses the 12-hour clock for the preceding h or hh specifier, and displays 'am' for any hour before noon, and 'pm' for any hour after noon. The am/pm specifier can use lower, upper, or mixed case, and the result is displayed accordingly.
a/p	Uses the 12-hour clock for the preceding h or hh specifier, and displays 'a' for any hour before noon, and 'p' for any hour after noon. The a/p specifier can use lower, upper, or mixed case, and the result is displayed accordingly.

Examples.

{Date dddddd}	Monday, January 26, 2009
{Time tt}	8:39:50 AM

Group export and import

In the Network version of TypeltIn you can share groups of buttons with other users.

To export a group, right click on the Group list and select [Export group](#) to file from the Group menu . Select the directory that you want to save the group file to and click the Save button. A Group export options dialog will pop up. After you click OK TypeltIn will save the group to a [groupname.tgf](#) file in the directory you selected.

By default the group will be saved as [groupname.tgf](#). For example, the [Example](#) group will be saved as [example.tgf](#). You can change the file name, but the name of the group will be preserved.

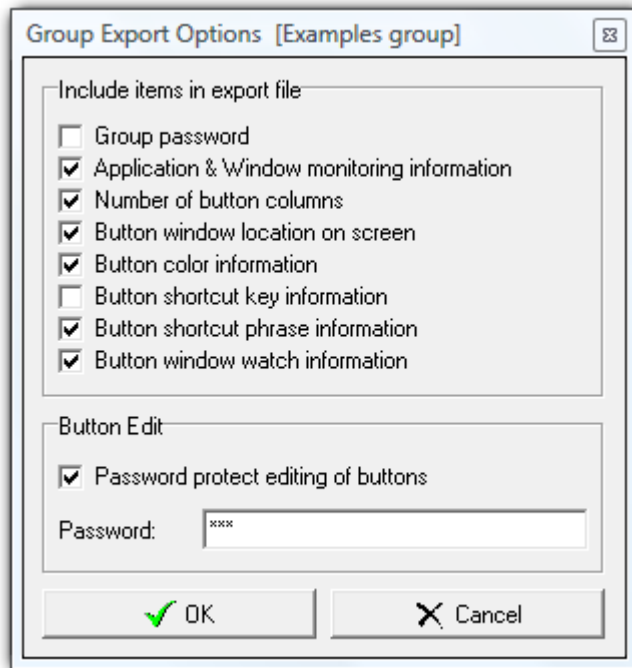
To import a group, right click on the Group list and select [Import group](#) from file from the Group menu . Select the directory where the group file is located, select the appropriate file, and click the Open button.

TypeltIn will create a new group if the group you are importing does not already exist and import the buttons. If the group already exists TypeltIn will add the new buttons to the existing group. If a button with the same name already exists in the group, the button will be updated with the information from the group file.

You can also export a group to in [Comma Separated Value \(*.csv\) file format](#) that can be imported by other programs like Microsoft Excel. In the Export group to file dialog, select [*.csv](#) as the Save as type before clicking the Save button.

The Import function also supports the [Comma Separated Value \(*.csv\) file format](#). You can create a .csv file with Microsoft Excel that can be imported into TypeltIn to create a group of buttons based on Excel data. The easiest way to get this started is to first Export a group in the .csv file format and modifying the file with your Excel data.

Group export options



Group password. Checking this option will include the group's password protection in the export file. This function is only available if the group you are trying to export is password protected.

Application & window monitoring information. If the group is configured to pop up when a specific application or window is active checking this option will include that information into the export file.

Number of button columns. Check this box to include the number of button columns in the export file. If this box is not checked the buttons will be displayed in a single column.

Button window location on screen. Check this box to include the button window location in the export file.

Button color information. When this box is checked TypeltIn will include the button text and background color in the export file. If this box is not checked, the text color will be set to black and the background color to the standard windows button color.

Button shortcut key information. Check this box to include assigned shortcut keys in the export file.

Button shortcut phrase information. Check this box to include assigned shortcut phrases in the export file.

Button window watch information. When this box is checked TypeltIn will include any assigned window watch information in the export file.

Password protect editing of buttons. You must enter a password if you check this box. With this option checked a user that imports this group without entering the password will be able to use the buttons, but not edit them.

List from file

You can create a selection list from a file with the `{FileList FileName}` command. For example, `{FileList C:\Temp\MyList.txt}` will load the `C:\Temp\MyList.txt` file and show a list of items based on the lines in the file.

The format of the text file that contains the list is one list item per line with an item label and an item value separated by a comma.

For example:

```
One,1
Two,2
Three,3
Four,4
More,{list 1,2,3}
Hello,Hello{enter}
```

This will show a list of [One](#), [Two](#), [Three](#), [Four](#), [More](#), and [Hello](#) for you to select from. If you select [Two](#) `TypeItIn` will type `2`. If you select [Hello](#), `TypeItIn` will type [Hello](#) and press the [Enter](#) key. If you select [More](#) `TypeItIn` will pop up another list for you to choose from.

You can use other programs to generate the list file as long as it is in a standard text file format. For example, you can use Microsoft Excel to save your part number data to a Comma Separated Value (CSV) file format to create a list of part numbers or item descriptions.

You can also let the user select an item from a list and store the selection in a variable with the `Var List` special function. You can then use the `If`, `Else`, `Elseif` function to perform specific functions based on the user's selection.

Purchase TypeltIn

TypeltIn is shareware which means you can download and use it for free for 30 days to evaluate it.

If you would like to continue to use after 30 days please purchase a license. This license will be valid for the version of TypeltIn that you are using and all future versions of the license you purchase and does not expire. TypeltIn has been around for more than 10 years and will be around for many more, so we are positive that a TypeltIn license is a good investment.

For example, if you purchase a TypeltIn Professional license, it will be valid for all future versions of TypeltIn Professional.

To find out what version you are using, right click on the TypeltIn icon in the task bar tray and select About TypeltIn from the pop up menu.

The cost per license is **\$19.95** for the Professional version and **\$29.95** for the Network version.

The easiest way to purchase TypeltIn is on-line using your credit card or PayPal on a secure server. Find out more on how to purchase on-line at <http://www.wavget.com/register.html>

Special volume discounts are available, up to 50%. Please email support@wavget.com for more information on how TypeltIn can improve your employee's productivity and accuracy. Visit <http://www.wavget.com/register.html> and fill out the Quotation request form to receive an official quotation to get your purchasing department started. TypeltIn is also available through a variety of resellers.

Dialog

The dialog function can display several types of dialog boxes to the user.

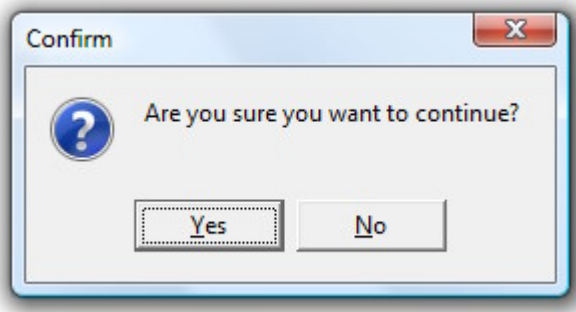
Format: {Dialog VariableNumber,DialogType,[Buttons],DialogText}

The variable number is the number of the variable that will be used to store the text of the button the user clicked to close the dialog.

The dialog type can be **Warning**, **Error**, or **Confirmation** and determines what icon is displayed in the dialog box.

The buttons can be **Yes**, **No**, **OK**, **Cancel**, **Abort**, **Retry**, **Ignore**, **All**, **NoToAll**, and **YesToAll** separated by commas.

The dialog text is the text that shows in the dialog box.



Example of a confirmation dialog: {Dialog 1,Confirmation,[Yes,No],Are you sure you want to continue?}

You can then use the **If, Then, Else** function to evaluate the user's response.

If the user clicks the **Yes** button, variable 1 will contain **YES** else it will contain **NO**.

Command line

You can activate a button in a copy of TypeltIn that is already running by starting a second copy of TypeltIn with command line parameters.

For example, running `typeitin.exe Examples Notepad` from the command line will press the [Notepad](#) button in the [Examples](#) group. Use "" if a group or button name contains a space, like `typeitin.exe "group name" "button name"`.

You can use [Windows Task Scheduler](#) to run TypeltIn with a command line to activate a button at a specific time. This button could run a program and activate specific functions in the program.

Note: This will not start a second instance of TypeltIn, it will only notify the already running copy of TypeltIn to activate the button.

Run from FLASH drive

If you select a removable drive during Setup TypeltIn will be configured to run from and store the button data file on the removable drive.

All the required files, including the data files that contain the button information, will be stored in a single directory on the removable drive.

Data file location

Starting in version 2.9 TypeltIn button data files are saved in the following directory:

Windows Vista: [C:\users\UserName\AppData\local\TypeltIn](#)

Windows XP: [C:\Documents and Settings\UserName\Local Settings\Application Data\TypeltIn](#)

Replace UserName with your windows login name. You can easily open Windows Explorer window to view these files in Setup - Settings by clicking on the [Manual](#) link in the [Backup](#) section.

Existing data files from earlier versions of TypeltIn are copied to the new data file directory on installation of version 2.9.

The Network version defaults to the same directory when first installed, but the data file directory can still be changed in Setup - Network .

See [restore buttons from another computer](#) on how to restore your old buttons on your new computer.

Restore buttons from another computer

All button information is stored in two files, [TypeltIn.ini](#) and [Datafile.enc](#). TypeltIn.ini may show as a [Configuration Settings](#) file named [TypeltIn](#) and the [Datafile.enc](#) file may show as a [ENC file](#) named [Datafile](#).

In version 2.8 and earlier the data files were stored in the same directory as the TypeltIn.exe file. The default for this directory is [c:\program files\typeitin](#).

Starting in version 2.9 TypeltIn button data files are saved in the following directory:

Windows Vista: [C:\users\UserName\appdata\local\TypeltIn](#)

Windows XP: [C:\Documents and Settings\UserName\Local Settings\Application Data\TypeltIn](#)

Replace UserName with your windows login name.

To transfer your buttons from your old computer to the new one first exit TypeltIn on the old computer if it is running: Right click on the TypeltIn icon in the task bar tray and select [Exit](#) from the pop up menu. Then open My Computer and find the directory (folder) where the two data files are located and copy them to some form of removable media like a FLASH drive.

Then open [Setup - Settings](#) and click on the [Manual](#) link to open Windows Explorer with the location of the data files on the new computer.

Close the Setup window, and exit TypeltIn on the new computer: Right click on the TypeltIn icon in the task bar tray and select [Exit](#) from the pop up menu.


Then copy the two data files from the removable drive into the directory (folder) that you opened by clicking on the [Manual](#) link.

You can then run TypeltIn from the Start menu. All your buttons should have transferred to your new copy of TypeltIn.

Note: This will delete any buttons you may have created on the new computer.

Enter license information

Right click on the TypeltIn icon in the task bar tray (next to the clock) and select [Enter Registration](#) in the Tray menu .



License Information [Network]

Name:
Your Name Here

Code:
YOURCODERIGHTHERE

Verification:

Get Verification

OK

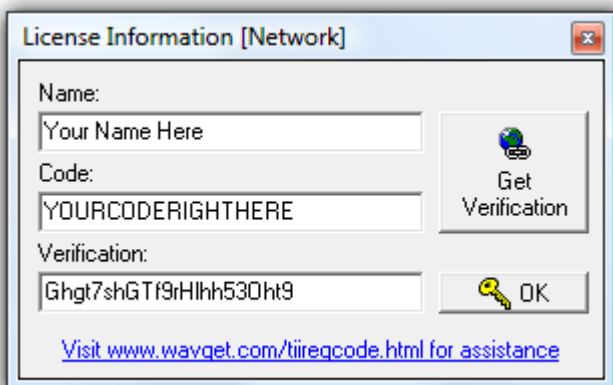
[Visit www.wavqet.com/tiireqcode.html for assistance](http://www.wavqet.com/tiireqcode.html)

In the License information dialog, enter your name and code exactly as in the registration email you received. Identical Capital Letters in the correct locations are important. Also make sure there are no spaces or other characters before or after your name and code.

Also make sure that you are using the version that you purchased a license for, the professional or Network version.

If you enter your name and code correctly, the [Get Verification](#) button will be enabled. Make sure you are connected to the Internet and click this button to open your browser with a page that will display your verification.

Copy the verification string from the web page to the verification box in the License Information dialog window. Again, please make sure there are no spaces or other characters before or after your name and code.



License Information [Network]

Name:
Your Name Here

Code:
YOURCODERIGHTHERE

Verification:
Ghgt7shGTf9rHlhh530ht9

Get Verification

OK

[Visit www.wavqet.com/tiireqcode.html for assistance](http://www.wavqet.com/tiireqcode.html)

If you copy the verification string correctly the [OK button](#) will be enabled. Click the OK button to finalize the registration process.

To verify that your license was accepted, right click on the TypeltIn icon in the task bar tray and click on [About TypeltIn](#) in the tray menu .

The [About TypeltIn](#) dialog will display the TypeltIn version information and the registration name.

Internet Explorer control

TypeltIn can open and control up to 10 Internet Explorer windows.

Use the IE function to open an Internet Explorer window and navigate to a web page. For example `{IE2 google.com,10}` opens an IE window and navigates to google.com with a 10 second timeout. If the page is not completely loaded within 10 seconds a dialog will be displayed and typing will be stopped.

The IEWait function allows TypeltIn to wait for a web page to finish loading before continuing.

For example `{IE3 google.com,10}wavget.com{Enter}{IEWait3 5}{Ctrl a}{Ctrl c}` opens google.com in Internet Explorer window 3, waits for the page to load, and directs Google to search for wavget.com. TypeltIn then waits for the search results to load, selects all the text on the page with Ctrl-A, and then copies all the text to the clipboard with Ctrl-C.

If, Else, Elself

The If, Else, and Elself functions provides a conditional response to user input or variable contents.

For example, `{If (Var1=5) [The variable is 5]}` will type **The variable is 5** if the contents of variable 1 is 5.

In response to user input through a dialog box:

```
{Dialog 3,Confirmation,[Yes,No],Continue?}{If (Var3=YES) [You clicked Yes!{Enter}] Else [You clicked No!]}
```

This will type **You clicked Yes!** when you clicked the Yes button and **You clicked No!** when you clicked the No button.

The compare statement supports **>** for greater than, **<** for smaller than, **=** for equals, and **!** for does not equal.

For example, evaluating a number:

```
{Var2 =?Enter a number}{Var2} {If (Var2<5) [is under 5] Elself (Var2>10) [is over 10] Else [is between 5 and 10]}
```

For example this will type **1 is under 5**, or **7 is between 5 and 10**, or **12 is over 10** depending on what number you enter.

An example using the **! does not equal** comparison:

```
{Var2 =?Enter a number}{Var2} {If (Var2!5) [is not 5] Else [is 5]}.
```

For example this will type **1 is not 5**, or **5 is 5** depending on what number you enter.